

**Characteristics of Program Pradesh.**

[A] Differences in color, gloss, density of the wood, color of the wood, sanding of the surface, finishing layer thickness.

[B] Possibility of difference in color between solid and veneer parts.

[C] Wood is a natural product. As a consequence nuts and deviations in grain cannot be excluded.

[D] Small openings on nuts, cracks or seams are filled with matching wood paste in order to get a smooth surface.

[E] Small swellings underneath the finishing cannot be prevented. Also small level differences at glue lines cannot be prevented as a consequence of the "working of the wood".

[F] It is not allowed for glue lines to become white or break. This is also applicable for filled cracks.

[G] Rounding of edges of doors, drawers, legs and tops is in most cases initially done by machine and afterwards by hand. This can slightly alter the dimensions/shape of profiles and edges. smooth.

[L] This line is manufactured from Accasia wood and veneered MDF. The wood used is derived from thinner trees and therefore color differences in 1 slat are more common.

[M] Nuts (filled), cracks and sapwood critical for the atmosphere of this line. In the wild the Accasia tree has a rather bended and twisted appearance. As a consequence the slats which can be sawn from this tree are shorter and it is required to finger joint these shorter slats in order to create longer ones (also see D-E-F-G).

[N] This line is deliberately aged with dents, cuts, chipped. The surface is also semi-scraped and the edges of the top has a waved appearance.



D39 Use of dowels



L28 Accasia  
Characteristics → color differences, knots, cracks



L28 Accasia  
Characteristics → color differences, knots, cracks



Connection for the frame, panels is veneer so normally this connection will not move.



L29 Accasia Characteristics → color differences, knots, cracks



N30 Aging  
and wind  
crack

Sliding table  
Pradesh ref.  
3629



121023  
COLLI 1 VAN 1  
8 712696 235391  
SCHUIFTFL PRADESH 90X170+50CM  
I7  
**03629 SRB**



Packaging of extension part.



Wooden slats as stocking.

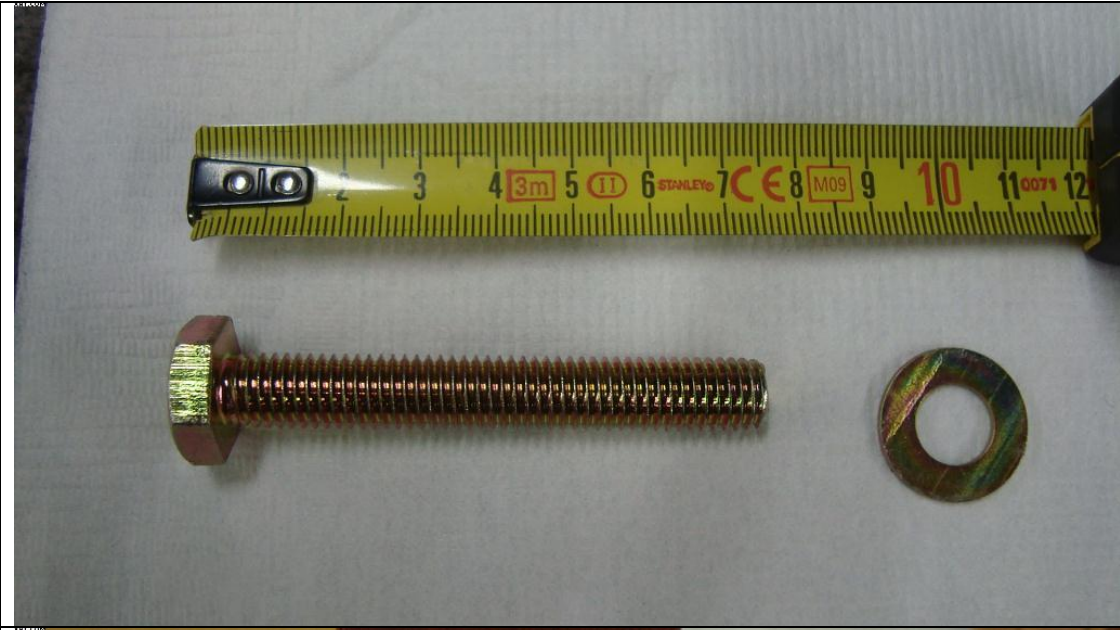




Metal catchers - brass color - to assure that top closes well when in unextended position.



Metal sliding system.



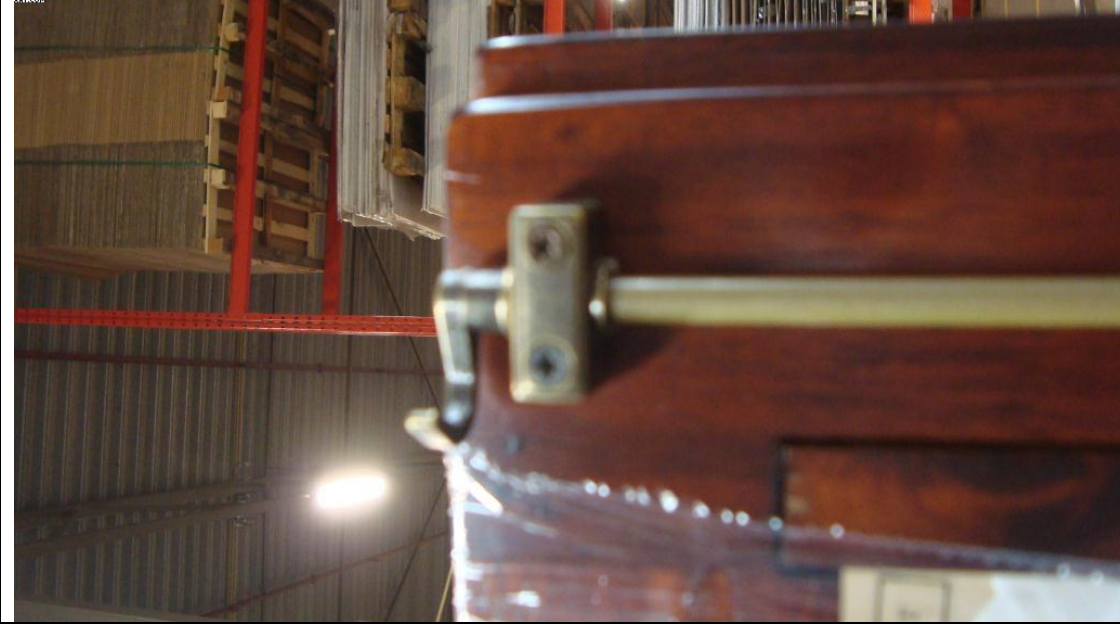
Metal bolts to assemble the table legs.



Assembly of table legs.



Bar lock on some items.







On left is metal catcher of sliding lock; right is the metal catcher for bar lock.



Metal sliding lock on door.



Metal lock shield.



Metal inlay.

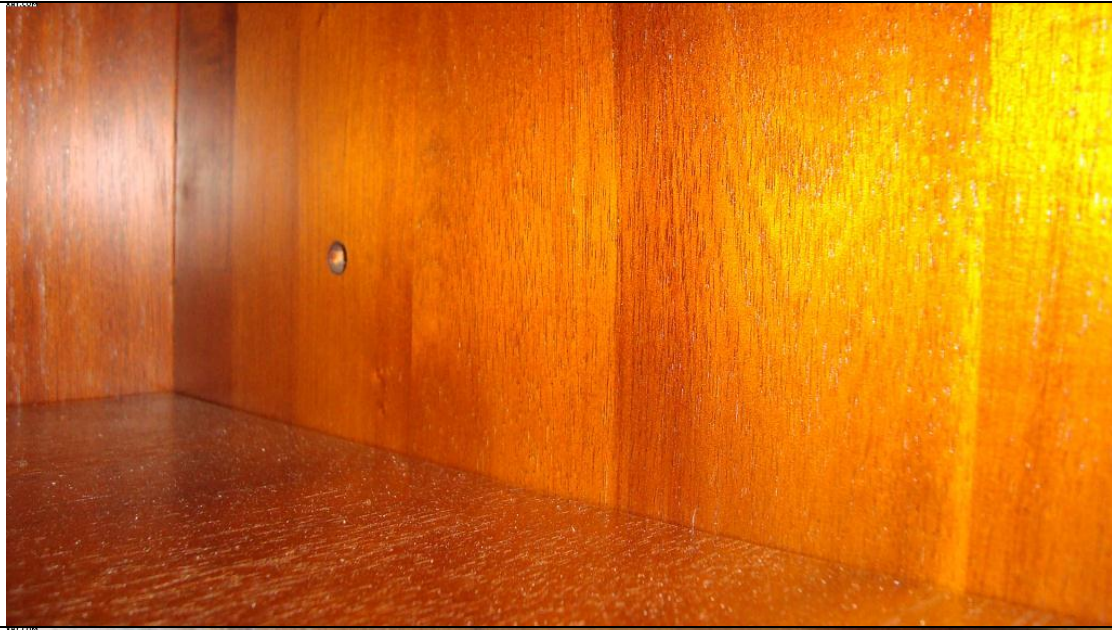


Metal grip/ring.



Metal shelf support.





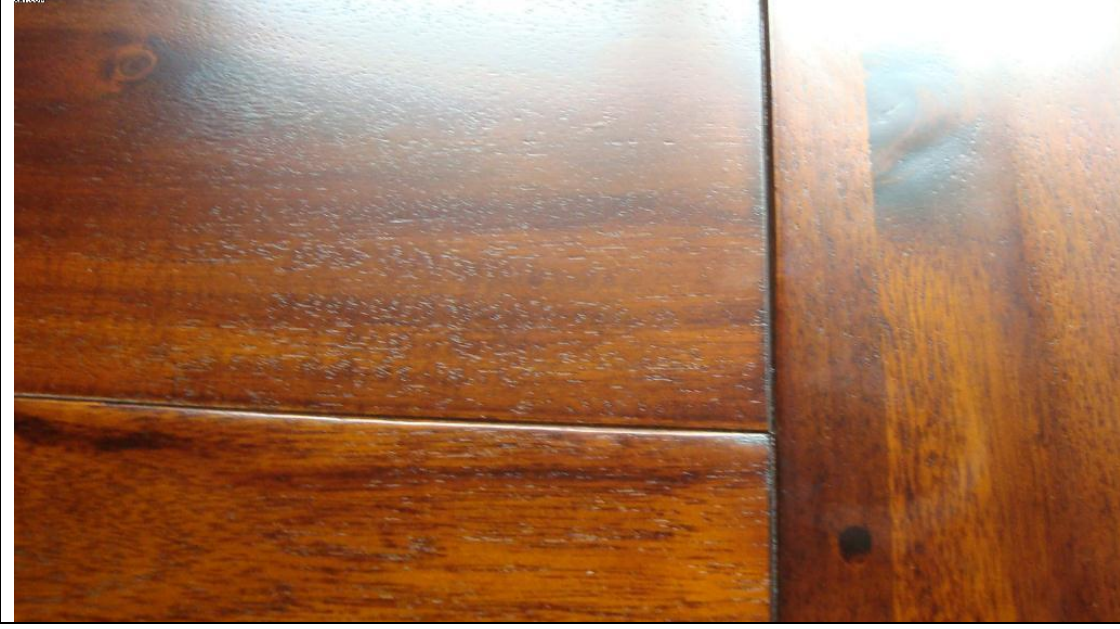
Some shelves are adjustable in height.



Knots are allowed - even required - to create special look/ atmosphere..



Metal up deck hinges.



Panels in the tops fall back with few mm compared to the frame.





On some parts are put V grooves.



V grooves.



	<p>Panels in top fall back with few mm compared to frame; V grooves and dowels.</p>
	<p>V grooves. Small chip offs are inevitable.</p>



V grooves in panel and panel falls back few mm compared to frame.

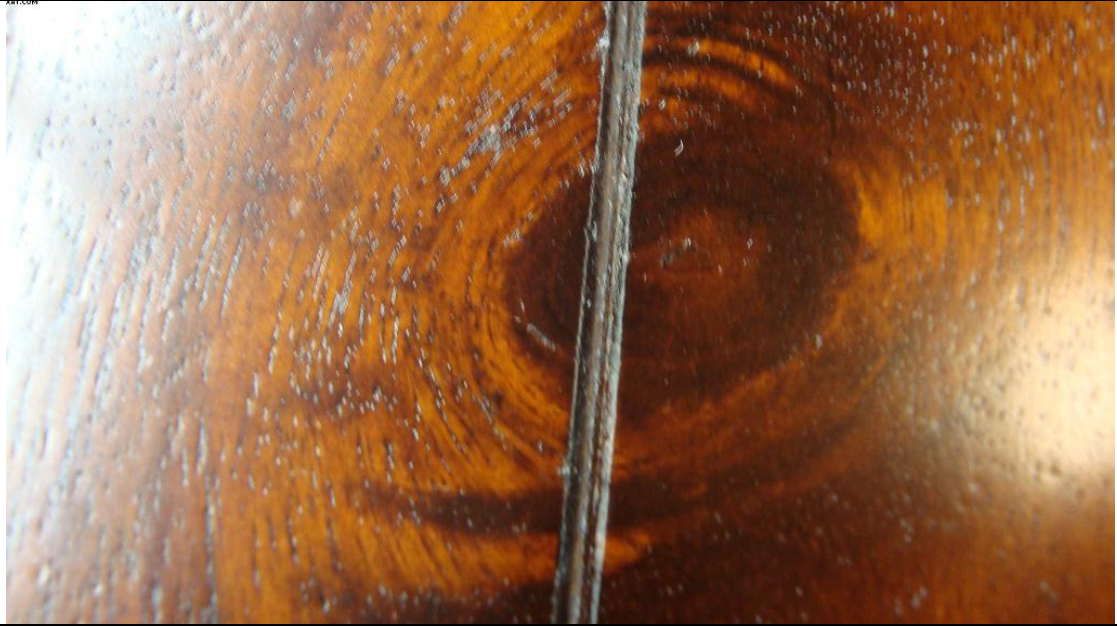


Knots are allowed - even required - to create special look/ atmosphere..





Knots are allowed - even required - to create special look/ atmosphere.. Knots are allowed to be filled with filler.



V grooves and knots.





V grooves on drawer fronts.



V grooves on the top running until side of top.



V grooves on the top running until side of top.



Because of manual aging some chip offs in the wood are inevitable; these need to be well sanded and finished.





Because of manual aging some chip offs in the wood are inevitable; these need to be well sanded and finished.



Because of manual aging some chip offs in the wood are inevitable; these need to be well sanded and finished.



Because of manual aging some chip offs in the wood are inevitable; these need to be well sanded and finished.



For bookcases where the sides of the crowning are delivered knock down small level difference with the front of the crowning is inevitable.



Rounding off on the corners.

Rounding off on the corners.

Rounding off on the corners.

Diamond shaped dowels.





V grooves  
and diamond  
shaped  
dowels on  
the table  
tops.